

<p style="text-align: center;">DAVIE COUNTY, NC FIRE MARSHAL'S OFFICE STANDARD OPERATING GUIDELINES</p>	REVISION DATE 6/5/2018
<p style="text-align: center;">SUB DOCUMENT</p> <p style="text-align: center;">INCIDENT MANAGEMENT SYSTEM</p>	OPERATIONS PAGE 1 OF 8
<p style="text-align: right;">DCFM #</p>	500-003

Purpose: Provide for the safety of personnel operating at emergency incidents through command and control of on scene resources and tactical effectiveness. To meet the OSHA, EPA, and NFPA 1500 requirements for operation at emergency incidents.

Scope: All personnel operating on an emergency scene.

This system is being set up using the National Fire Academy model system as a guide **and all incidents will abide by NIMS standards**

1. Procedure:

1.1. Incident priorities

- Life Safety
- Property Conservation
- Incident Stabilization

1.2. Command

Command shall be established at all incidents. Upon the arrival of the first fire unit on scene, the highest ranking personnel shall assume command.

1.2.1. Modes of command

1.2.1.1. **Nothing Showing Mode:** These situations generally require investigation by the first arriving company while holding remaining companies in Level 1 staging. The IC will proceed with the company and maintain command by use of portable radio.

1.2.1.2. **Fast Attack Mode:** Situations where the IC's direct participation with the company crew will directly affect the immediate realization of the incident priority goals. This shall be accomplished by using Working Command and the IC will maintain command by using a portable radio.

<p style="text-align: center;">DAVIE COUNTY, NC FIRE MARSHAL'S OFFICE STANDARD OPERATING GUIDELINES</p>	REVISION DATE 6/5/2018
<p style="text-align: center;">SUB DOCUMENT</p> <p style="text-align: center;">INCIDENT MANAGEMENT SYSTEM</p>	OPERATIONS PAGE 2 OF 8
<p style="text-align: right;">DCFM #</p>	500-003

1.2.1.3. **Working Command:** This mode should not last more than a few minutes and will end with:

- a. The next arriving company or chief will automatically assume command. (Passing of Command)
- b. The incident being mitigated.
- c. The IC if withdrawing to an exterior location due to additional companies arrival. If the situation is not stabilized, a Fixed Command will be established if necessary.

1.2.1.4. **Fixed Command:** Situations where a strong command structure is required from the beginning due to large resource commitment or a complex incident is to be expected.

1.2.1.5. **Unified Command:** Will be established under NIMS ICS standards whenever 2 or more agencies have legal jurisdiction or responsibilities.

1.2.2. Transfer of command:

1.2.2.1. Fixed command will be transferred face to face by the officer arriving on the scene.

1.2.2.2. The person being relieved will brief the officer assuming command, indicating the following:

- i. General status of situation..
- ii. Deployment of assignments of operating companies.
- iii. Appraisal of the needs for additional resources.

1.2.3. Establishing Command: With the arrival of the first unit on the scene, the person assuming command will give a brief report including:

- a. Unit identification on scene, with personnel assuming command, type of command, and location of command.

<p style="text-align: center;">DAVIE COUNTY, NC FIRE MARSHAL'S OFFICE STANDARD OPERATING GUIDELINES</p>	REVISION DATE 6/5/2018
<p style="text-align: center;">SUB DOCUMENT</p> <p style="text-align: center;">INCIDENT MANAGEMENT SYSTEM</p>	OPERATIONS PAGE 3 OF 8
<p style="text-align: right;">DCFM #</p>	500-003

- b. Building description(occupancy, size, construction, etc.)
- c. Obvious smoke or fire conditions.
- d. Any obvious life hazards.

Example # 1:

- Engine 101 arrival- 2 story wood frame residence, heavy smoke and fire 2nd story side A windows, persons in front yard. Engine 101-Officer **taking command**, Tanker 102 supply, Engine 103 back up attack crew.
- Tanker 102 arrival, supplying Engine 101 and backing up attack crew, 110 assuming **601 Command** side A.
- 100 arrival (with face to face transfer with 110 for briefing)
- 100 assuming **601 Command**, Engine 201 establish water supply.

Example #2:

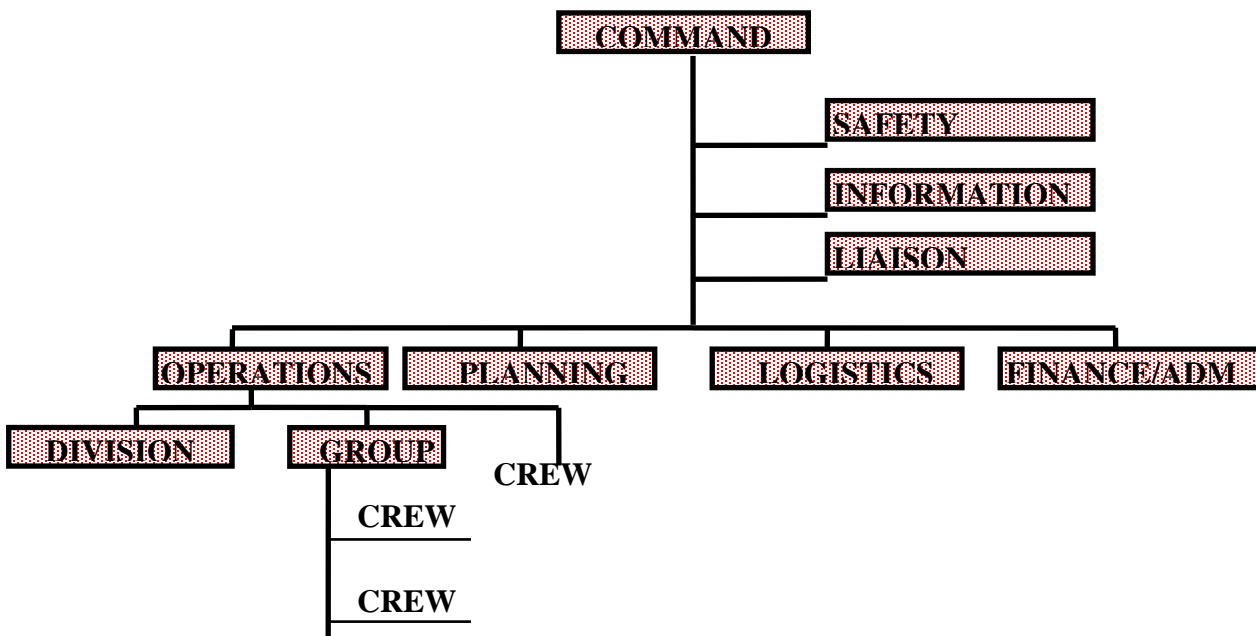
- Engine 101 arrival, 2 story wood frame residence, heavy smoke and fire 2nd story side A windows, persons in front yard.
- 100 is **Mountain Rd. Command**, side B.
- Tanker 102 supply Engine 101 and back up attack crew.
- Engine 201 arrival supplying Engine 101 and backing up attack
- Engine 301 from **Mountain Rd. Command** establish water supply

DAVIE COUNTY, NC FIRE MARSHAL'S OFFICE STANDARD OPERATING GUIDELINES	REVISION DATE 6/5/2018	
	SUB DOCUMENT INCIDENT MANAGEMENT SYSTEM	OPERATIONS PAGE 4 OF 8
DCFM #		500-003

1.3. Command Structure

The command structure will follow the NFA, ICS model using Branches, Divisions, Groups, and Crews in a modular system. This will allow the logical expansion of an incident to be able to encompass a small scene and grow to a very complex scene.

Included in this structure when necessary, the IC will utilize the command staff positions of Safety Officer, Liaison Officer and Public Information Officer to assist him with these functions.



<p style="text-align: center;">DAVIE COUNTY, NC FIRE MARSHAL'S OFFICE STANDARD OPERATING GUIDELINES</p>	REVISION DATE 6/5/2018
<p style="text-align: center;">SUB DOCUMENT</p> <p style="text-align: center;">INCIDENT MANAGEMENT SYSTEM</p>	OPERATIONS PAGE 5 OF 8
<p style="text-align: right;">DCFM #</p>	500-003

1.4. Staging

The function of staging is to:

- A. Prevent excessive apparatus congestion at the scene.
- B. Allow time for command to evaluate conditions prior to company assignments.
- C. Place apparatus and resources close to the scene for rapid assignment of tasks.
- D. Allow Command time to formulate and implement an action plan without undue confusion and pressure.
- E. Allow for better personnel accountability.

1.4.1. Level I Staging

After the arrival of first apparatus on scene, all following arriving apparatus will stop 600' (at least 2 telephone poles) away from the scene in the direction of travel toward the scene and there they will await orders from command, with the exception of unit arrival after the establishment of a Working Command. This unit will respond with the enroute orders and establish Fixed Command.

1.4.2. Level II Staging

When necessary Command will establish a staging area and appoint a staging area manager. The Staging Officer will advise Command of resources available in staging and maintain the level of resources he requires. Staging will be located near the scene for quick deployment of resources, far enough away to facilitate the amount of needed resources and limit on scene confusion.

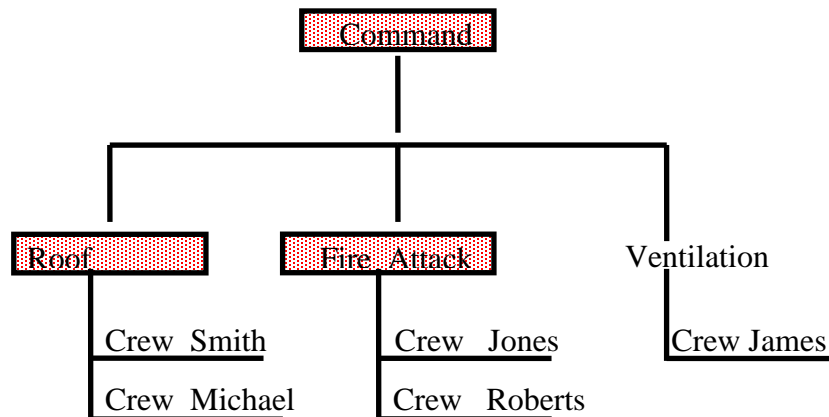
1.4.3. Staging will be a function under Command or Operation Branch. If an EMS division has been established, EMS may operate with its own EMS staging separate from the fire departments.

DAVIE COUNTY, NC FIRE MARSHAL'S OFFICE STANDARD OPERATING GUIDELINES	REVISION DATE 6/5/2018
	SUB DOCUMENT INCIDENT MANAGEMENT SYSTEM
DCFM #	500-003

1.5. Groups and Divisions

Division and Groups allow the IC to subdivide on scene resources to help maintain a workable span of control with crews working below them.

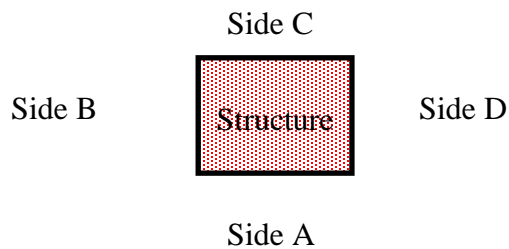
- A **Division** is responsible for a geographical location of an incident, (division A, or division 3, roof division) and is responsible for all tasks in that area. The division manager reports to the IC or Branch supervisor.
- A **Group** is responsible for a specific task assigned by the IC or Branch supervisor (fire attack, ventilation, S & R, water supply)



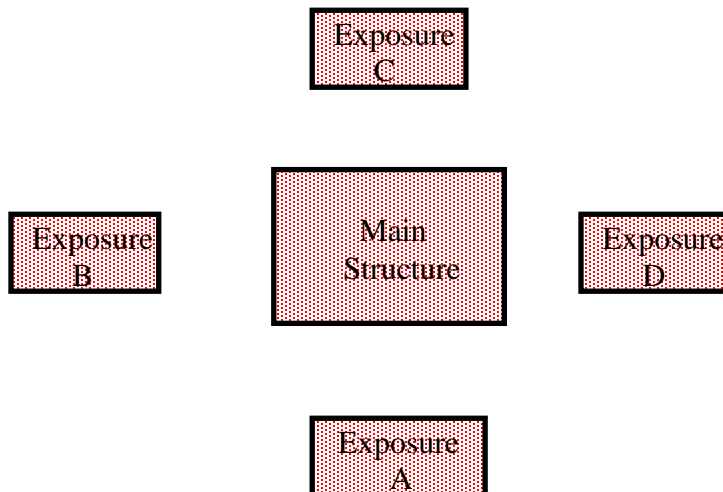
DAVIE COUNTY, NC FIRE MARSHAL'S OFFICE STANDARD OPERATING GUIDELINES	REVISION DATE 6/5/2018
	SUB DOCUMENT INCIDENT MANAGEMENT SYSTEM
	OPERATIONS PAGE 7 OF 8
DCFM #	500-003

1.6. Structure and Exposure Designation

To provide for clarity of location on the scene, a standardized division system will be used. Beginning on the front or address side will be designated side **A**, going clockwise around the structure, **B**, **C**, and **D**



Exterior Exposures will be designated with the same system.



<p style="text-align: center;">DAVIE COUNTY, NC FIRE MARSHAL'S OFFICE STANDARD OPERATING GUIDELINES</p>	REVISION DATE 6/5/2018
<p style="text-align: center;">SUB DOCUMENT</p> <p style="text-align: center;">INCIDENT MANAGEMENT SYSTEM</p>	OPERATIONS PAGE 8 OF 8
<p style="text-align: right;">DCFM #</p>	500-003

1.7. Radio Designations

- To ensure proper unity of command and avoid confusion on the scene all communications will use the function or task name.
- **Command, Ventilation crew, Interior, Attack, Division A, Roof, Exposure C, Water Supply, etc.**

1.8. Accountability

- ☛ Personnel accountability will be in accordance with SOP # 500-004
- ☛ In addition all personnel will report to their immediate supervisor, functioning within the unity of command in the ICS system.